

# Cynomolgus BDCA2 Protein; His Tag

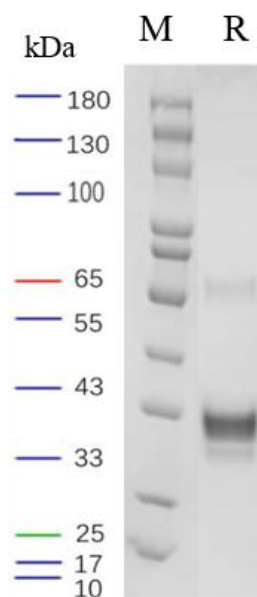
## Product Information

Product Name	Cynomolgus BDCA2 Protein; His Tag
Storage temp.	Store at $\leq -70^{\circ}\text{C}$ , stable for 6 months after receipt. Recommend to aliquot the protein into smaller quantities for optimal storage. Please minimize freeze-thaw cycles.
Catalog# / Size	GM-87524RP-100 / 100 $\mu\text{g}$ GM-87524RP-1000 / 1 mg

## Protein Information

Alternative Names	BDCA-2, DLEC, CLEC4C, CD303, CLECSF11, CLECSF7, HECL
Source	Cynomolgus BDCA2 Protein; His Tag (GM-87524RP) is expressed from human 293 cells (HEK-293). It contains AA Tyr 48 - Ile 212 (Accession # A0A2K5UWP4-1). This protein carries a His tag at the N-terminus.
Purity	> 95% as determined by SDS-PAGE
Endotoxin	< 1 EU/ $\mu\text{g}$ , determined by LAL gel clotting assay
Predicted Mol Mass	18.9 KDa
Formulation	Supplied as a 0.2 $\mu\text{m}$ filtered solution of PBS, pH7.4.
Description	<p>BDCA2 protein is a protein belonging to the human immune system, also known as BDCA-2 or CD303. It is a receptor protein expressed on the surface of dendritic cells (a type of immune cell). BDCA2 protein plays an important role in recognizing and capturing pathogens (such as viruses, bacteria, etc.), helping the immune system identify and respond to the invasion of foreign pathogens.</p> <p>BDCA2 protein typically works together with other immune cells to promote immune system responses, including generating appropriate antibodies and cell-mediated immune responses. Research suggests that BDCA2 protein may also play an important role in immune regulation and autoimmune diseases.</p> <p>In summary, BDCA2 protein is an important receptor protein in the immune system, playing a crucial role in immune responses and disease defense.</p>

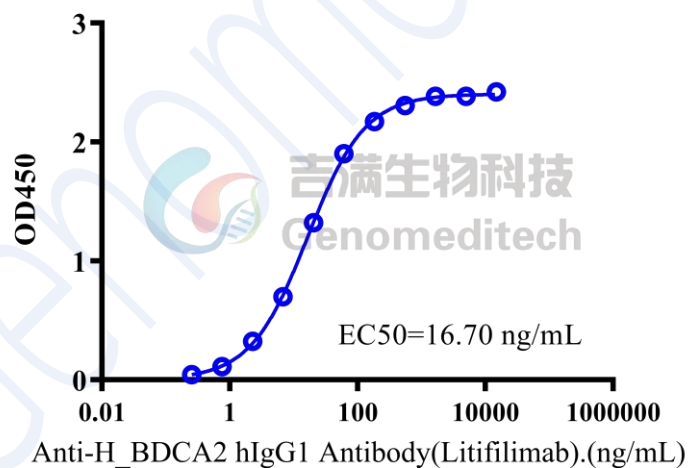
## SDS-PAGE



On SDS-PAGE under reducing (R) condition. The gel was stained overnight with Coomassie Blue. The purity of the protein is greater than 95%.

## Bioactivity-ELISA

### Cynomolgus BDCA2 Protein; His Tag, ELISA 0.1 $\mu$ g Cynomolgus BDCA2 Protein; His Tag of per well



Cynomolgus BDCA2 Protein; His Tag (Catalog # GM-87524RP) was immobilized at 1  $\mu$ g/ml (100  $\mu$ L/well). Increasing concentrations of Anti-H\_BDCA2 hIgG1 Antibody (Litifilimab) (Catalog # GM-31294AB) were added.